

ADVANCED DECK MIX

A PREMIUM BLEND OF THE HIGHEST QUALITY GRADED SILICAS, PORTLAND CEMENT AND OTHER PROPRIETARY INGREDIENTS.



TAWNY TAN #401385



FAWN #401356



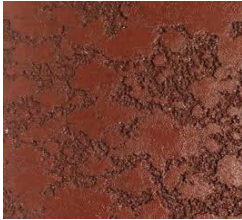
WHITE #401100



*** CORAL #401340**



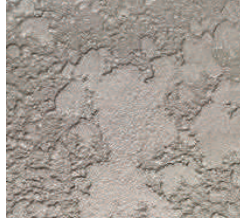
50 lb. bag



NAPLES RED #401372



ADOBE #401150



SILVER GRAY #401380



GRAY #401200

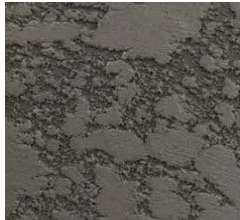
WHEN MIXED WITH OUR SUPER CONCENTRATED DECK RESIN, YOU CAN CREATE A VARIETY OF SPRAYED OR TROWELED ON DECORATIVE CONCRETE APPLICATIONS.



MOC BROWN #401368



CHARCOAL #401350



POWER GRAY #401377



PEACH #401374

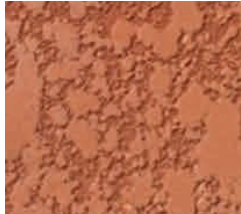
YOU CAN CREATE AN ASSORTMENT OF PATTERNS UTILIZING FILAMENT TAPE AND/OR STENCILS.

STRONGER, MORE FLEXIBLE AND HIGHER TENSILE STRENGTH THAN STANDARD CONCRETE.

AVAILABLE IN 16 PRE-COLORED SHADES ALLOWING FOR COLOR UNIFORMITY FROM ONE MIX TO ANOTHER.



*** GEORGIA CLAY #401358**



TERRA COTTA #401390



*** YELLOW #401400**



*** SALMON #401379**

*** DECK MIX PALLET PRICE ***

PALLETS IN STORE = 64 BAGS ALL THE SAME COLOR WITH (7) FIVE GAL OF DECK RESIN

SHIP OUTS = 56 BAGS ALL THE SAME COLOR WITH (6) FIVE GAL OF DECK RESIN.

COLORS WITH A (*) ARE SOLD BY PALLET ONLY!

ANALYSIS REPORT

Testing of ADVANCED DECK MIX USED IN SPRAY-ON APPLICATION

The test was conducted using materials per ASTM C1028: Weights -50 lbs. Calibrated and traceable to N.I.S.T., Digital Force Gauge-Chatillon 0-50 lbs., Model PRC50, traceable to N.I.S.T., Calibrated 8/11/93. Due 8/11/94

COEFFICIENT OF FRICTION—DRY

.60	.62	.62
.58	.64	.60
.60	.60	.62
.58	.58	.58

AVERAGE COEFFICIENT = .60

COEFFICIENT OF FRICTION—WET

.62	.66	.64
.60	.68	.64
.62	.70	.64
.64	.68	.64

AVERAGE COEFFICIENT = .65

According to the Ceramic Tile Institute CTI 82-1-1 (R90), this material would be considered slip resistant.

TENSILE STRENGTH ASTM C-190

3-Day	850 psi/min
7-Day	1005 psi/min
28-Day	1075 psi/min

COMPRESSIVE STRENGTH ASTM C-109

3-Day	5050 psi/min
7-Day	6560 psi/min
28-Day	7225 psi/min

The above specifications are based on the proper use of Advanced Deck Resin with Advanced Deck Mix to achieve the results indicated.

APPROXIMATE COVERAGE: 50 lb. bag

BASE COAT	35-50 sq. ft.
SKIM COAT	80-100 sq. ft.
TEXTURE SURFACE	150 sq. ft.
URO SURFACE	35-50 sq. ft.