

2000 Banks Road • Margate, Florida 33063

Decorative Concrete • Products & Systems

50 lb. Deck Mix



INSTRUCTIONS FOR INSTALLING URO SYSTEM



Super Concentrated Resin

PREPARATION:

1. **Epoxy Chattahoochee/Natural Stone** should be removed by using an electric chipping hammer. Advanced Epoxy Solvent may be used to aid in the removal process. All stones and glue should be removed.
2. **Kool Deck or sprayed on Knock Down surfaces** do not have to be removed as long as the surfaces are sound (NOT lifting or peeling). If removal is required use a chipping hammer or scarifier and scrapers.
3. **Pressure clean** the entire surface to remove dirt and mildew. A chlorine solution with water will aid in this process (mix chlorine 50/50 with water). Apply this mixture with a sprinkling can over the surface and let stand for approximately 15 to 20 minutes, then pressure clean the entire surface. Allow to dry completely before proceeding with the new surface application.

MIXING INSTRUCTIONS:

Resin Bonding Agent - In a bucket mix One (1) part Super Concentrated Deck Resin to One (1) part water. Roll on to existing surfaces before applying new surface application. Allow to dry.

Or

Grainy Prep - Use Super Concentrated Deck Resin full strength and a few handfuls of Advanced Deck Mix to make the solution into a grainy consistency. Use a 3/4" nap roller to apply this prep over the entire area. Allow to dry approx. 30 to 45 minutes. Use this method to maximize bonding to sealers, glossy surfaces, paint, stain or epoxy residue that are in sound condition.

Skim Coat & URO System base coat - Mix One (1) part Advanced Super Concentrated Deck Resin to Two (2) parts water = Three (3) Gal. of resin/water. In a five gal. bucket add approx. 1½ gal. of this mixed resin and water to 50 lb. of deck mix (1 bag). Mix to a frosting like consistency. Allow to go into a false set for approx 5 to 8 minutes. Add additional resin/water to bring it back to the consistency you desire.

STARTING THE PROCESS:

Before the surface dries, after pressure cleaning, mark out all low areas where puddles exist. After the surface is dry, fill in the low areas by troweling Advanced Surfaces Deck Mix and Super Concentrated Deck Resin mixture (add fiber for additional strength). Proper drainage is a very important part of preparation. After the product has completely dried, spray water on the deck to make sure you have achieved proper drainage.

On many concrete substrates skim coating is necessary after applying a resin or grain prep bonding agent. This will smooth out the present surface and give a good base foundation for the URO surface. Before skim coating, mark out all cracks in the substrate using 3/8" filament tape. Trowel over the tape and pull the tape before the skim coat dries. This will expose the cracks so they can be incorporated in the URO System stone design. Allow 4 to 6 hours for the skim coat to dry properly.

You are now ready to begin the **URO System base coat**. See above for mixing instructions. Each 50 lb. Bag of deck mix will cover approximately 35 sq. ft. to a consistent 1/8" thick. It is very important to maintain this thickness. Allow drying to the point you can walk on the base coat with

Advanced Surfacing Systems

Pool Decks • Patios • Driveways • Walkways • Entranceways

white socks. **Using a URO Cutting Tool** (1/4", 3/8", 1/2", 3/4"), cut the design down thru the base coat to the skim coat, 90% of the design will be a stone design incorporating all cracks into the cut grout lines, so when cracks reappear they will be in the grout lines and not thru the stone design. Allow the base coat to dry completely (6 to 8 hours).

You are now ready to **shade color** on the stone design. Mix one of our pigmented shading colors with clear water. Make the mixture loose but not a watery consistency. Using a camel back sponge, apply the color to each stone. The more color applied the darker the stone will become, less color the lighter it will be. Allow the shading to dry. Use a clean dry to slightly moist camel back sponge to remove all sponge marks. Allow to thoroughly dry and then apply one coat of URO Sealer. Apply using a 1/2" nap roller, saturated the roller and apply with long continuous overlapping strokes. Allow sealer to dry, approximately 1 hour.

You are now ready to **grout**. Using a selected color of Deck Mix, add water to achieve a frosting like consistency. Use a hard rubber grout float to apply the grout mixture into the grout lines. Use a foam sponge and a clean pail of water to clean grout from the stone design. DO NOT allow grout to dry on the stone design. Grout left on the stone design will be noticeable on your finished product. Allow grout to dry approximately 4 to 6 hours. (One 50 lb. Bag will grout approximately 700 sq. ft., based on the width of the grout.)

You are now ready to apply the final three coats of URO sealer. Coverage: 150 to 200 sq. ft. per gallon. Allow each coat to dry. If a slip resistant finish is desired, add a quart of **Advanced Skid Guard** to one 5 gallon of sealer. Apply the last two coats of sealer with the Skid Guard additive. Allow to dry: 2 to 3 hours for foot traffic and 72 hours for vehicular traffic.



Deck Mix - 50 lbs.
16 colors available
Catalog Page A-1



URO Cutting Tool
1/4", 3/8", 1/2", 3/4"
Catalog Page N-16



Roller Frame
Catalog Page N-9



Roller Cover
Catalog Page N-9



Advanced URO Sealer
Catalog Page D-8



URO Super
Concentrated Deck
Resin
Catalog Page B-1



URO Shade Jug
25 Shade Colors
Catalog Page F-1



(CB) Camel Back
Sponge
Catalog Page N-12



Foam Sponge
Catalog Page N-12



Grout Float
Catalog Page O-4



Skid Guard
3.2 oz. - 1 qt. - 5 gal.
Catalog Page E-1

Advanced Surfacing Systems

Pool Decks • Patios • Driveways • Walkways • Entranceways

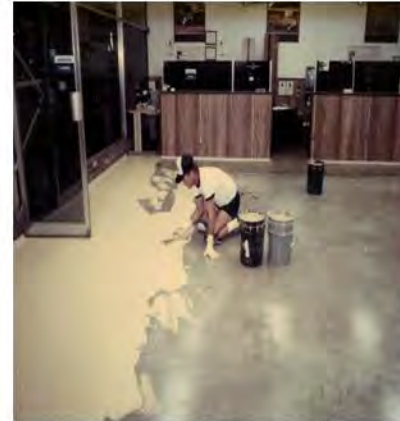
URO Surface Installation Procedure

1



Mixing Advanced Deck Mix & Resin

2



Applying Skim Coat and then Base Coat

3



Cut the design

4



Shade URO surface desired shades

5



Seal 1st coat of URO Sealer

6



Grout all areas and clean thoroughly



7



Apply final coats of sealer

Advanced Surfacing Systems

Pool Decks • Patios • Driveways • Walkways • Entrances



URO Surface

